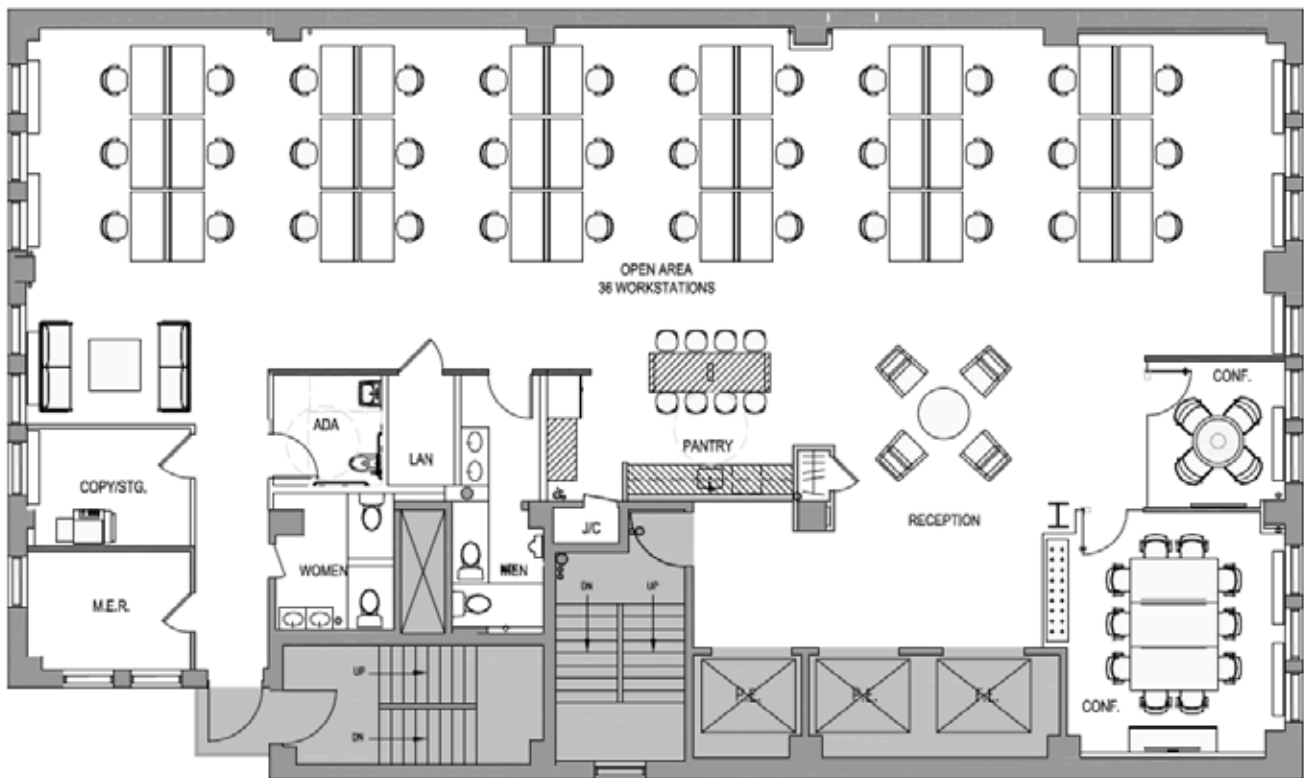




Entire 3rd Floor - 5,579 RSF

Landlord pre-building with high-end creative finishes



For leasing information, please contact:

Scott J. Klau

t 212-372-2244

scott.klau@nmrk.com

Erik S. Harris

t 212-372-2105

erik.harris@nmrk.com

Zachary A. Weil

t 646-441-3744

zachary.weil@nmrk.com

NEWMARK

**HARBOR GROUP
INTERNATIONAL**